

YEAR 2013

CORE STATION 5024

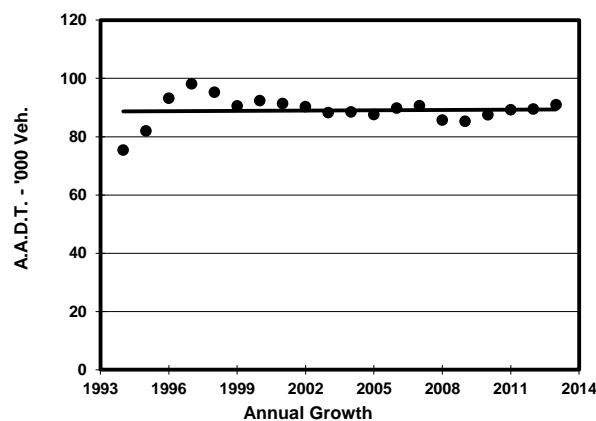
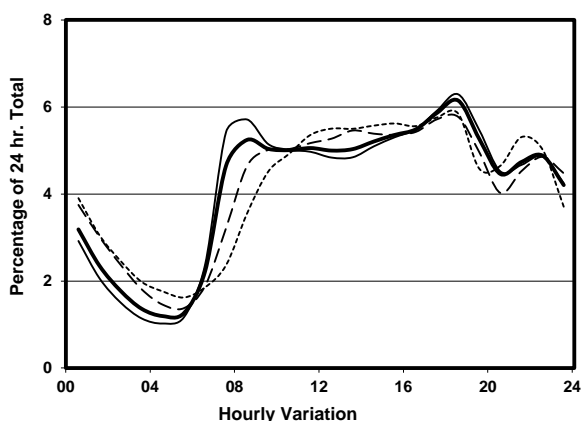
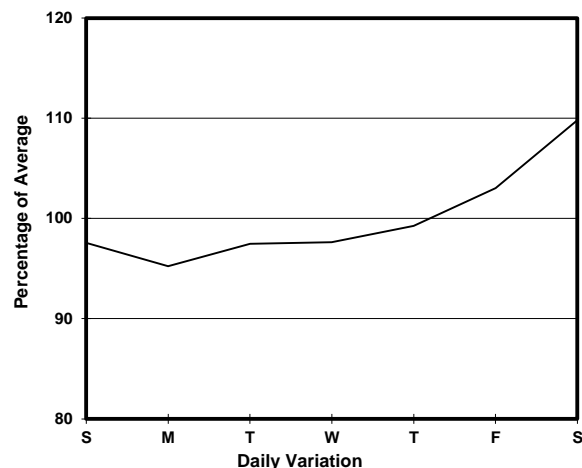
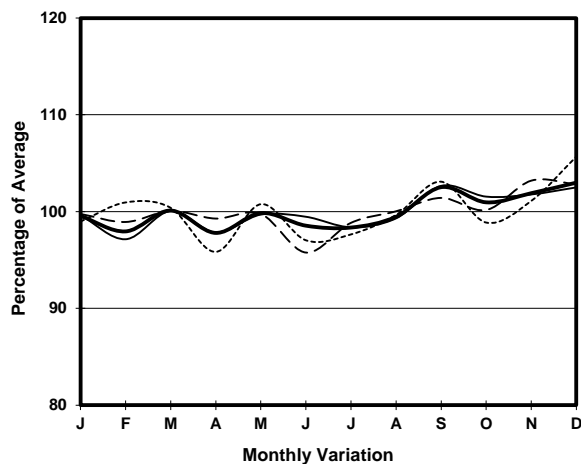
ROAD NETWORK MAJOR

ROAD TYPE URBAN TRUNK ROAD

LINK LION ROCK TUNNEL (from TOLL PLAZA to SOUTH PORTAL)



## 1. TRAFFIC FLOW VARIATION AND GROWTH



## 2. TRAFFIC CHARACTERISTICS (BY DIRECTION)

Parameter	All - Day	Mon. - Fri.	Sat.	Sun.
<b>SOUTH BOUND</b>				
A.A.D.T.	44740	44050	49290	43910
R 12 / 24 - %	68.3	69.2	66.7	65.4
R 16 / 24 - %	84.5	85.1	82.9	82.9
AM Peak Hour	0800-0900	0700-0800	0900-1000	0900-1000
One-way flow at AM peak hour	2760	2960	2890	2380
T - % (AM)	-	15.4	-	-
PM Peak Hour	1800-1900	1800-1900	1800-1900	1800-1900
One-way flow at PM peak hour	2780	2740	2960	2820
T - % (PM)	-	9.9	-	-
Prop.of commercial vehicles - 16 hr.	-	13.1	-	-
<b>NORTH BOUND</b>				
A.A.D.T.	46240	45660	50600	44970
R 12 / 24 - %	58.1	59.1	56.5	54.9
R 16 / 24 - %	80.5	82.1	76.9	76.5
AM Peak Hour	0900-1000	0800-0900	0900-1000	0900-1000
One-way flow at AM peak hour	2040	2200	2120	1640
T - % (AM)	-	15.1	-	-
PM Peak Hour	1800-1900	1800-1900	1700-1800	1600-1700
One-way flow at PM peak hour	2810	2900	2840	2530
T - % (PM)	-	10.5	-	-
Prop.of commercial vehicles - 16 hr.	-	13.7	-	-

## 3. OTHER INFORMATION AND COMMENT

**4. Vehicle classification and occupancy - Monday to Friday**

Time		Class of vehicle									
		Motor Cycle	Private Car	Taxi	Private LB	PLB	Goods veh.		Non Fr. Bus	Fr. Bus	
							Light	M & H		SD	DD
0700-0800	Pro	1.7	51.2	11.6	3.1	0.3	13.7	4.0	7.8	0.2	6.4
	Ocp	1.1	1.5	2.2	7.8	7.7	1.5	1.2	13.1	20.0	46.4
0800-0900	Pro	2.4	57.3	8.3	1.2	0.1	16.5	4.5	4.2	0.2	5.3
	Ocp	1.0	1.5	2.1	6.0	7.0	1.6	1.3	9.7	13.2	47.1
0900-1000	Pro	0.6	51.3	11.2	0.5	0.2	22.6	5.0	2.3	0.2	6.0
	Ocp	1.0	1.4	1.8	1.5	3.7	1.5	1.3	5.5	10.1	26.5
1000-1100	Pro	1.1	41.0	13.3	1.0	0.2	26.6	7.8	3.4	0.1	5.6
	Ocp	1.0	1.4	1.9	5.1	5.5	1.4	1.3	9.4	11.0	21.4
1100-1200	Pro	1.5	41.0	15.6	1.8	0.0	24.4	6.2	4.4	0.3	4.8
	Ocp	1.1	1.5	2.0	3.3	0.0	1.6	1.1	11.8	8.3	26.5
1200-1300	Pro	0.8	46.3	14.9	2.5	0.2	21.2	4.4	4.7	0.2	5.0
	Ocp	1.1	1.6	2.0	6.5	5.0	1.6	1.2	13.0	9.0	29.9
1300-1400	Pro	1.0	42.4	14.1	1.5	0.1	25.3	6.4	4.1	0.2	5.0
	Ocp	1.0	1.5	2.0	3.0	4.0	1.4	1.2	10.1	8.0	26.7
1400-1500	Pro	0.9	44.1	12.8	2.0	0.1	24.5	6.6	3.8	0.2	4.9
	Ocp	1.1	1.6	1.9	2.7	3.0	1.6	1.3	7.4	6.7	31.1
1500-1600	Pro	1.8	49.2	11.1	2.1	0.0	23.3	5.1	2.1	0.3	4.9
	Ocp	1.0	1.6	2.0	7.1	0.0	1.5	1.3	10.7	9.0	31.8
1600-1700	Pro	0.8	47.9	12.7	1.9	0.0	21.1	5.4	4.3	0.2	5.7
	Ocp	1.2	1.5	1.8	4.7	0.0	1.5	1.3	8.1	7.6	30.0
1700-1800	Pro	2.2	50.0	12.2	1.5	0.3	19.4	4.7	3.7	0.2	5.9
	Ocp	1.0	1.6	2.0	2.7	15.7	1.5	1.3	9.0	14.4	40.7
1800-1900 Peak hour	Pro	2.0	62.5	9.1	0.4	0.2	15.6	2.1	3.2	0.2	4.7
	Ocp	1.1	1.5	2.2	3.0	9.3	1.6	1.1	20.2	18.1	54.2
1900-2000	Pro	2.2	64.2	14.5	0.0	0.4	8.8	2.0	2.9	0.1	4.9
	Ocp	1.2	1.5	2.1	0.0	10.6	1.5	1.0	14.7	25.3	52.1
2000-2100	Pro	0.9	57.4	20.6	0.0	0.7	10.7	2.2	2.2	0.2	5.1
	Ocp	1.1	1.6	1.9	0.0	11.3	1.3	1.3	10.0	6.2	37.4
2100-2200	Pro	1.4	51.1	28.5	0.2	0.9	7.1	2.2	2.7	0.2	5.7
	Ocp	1.0	1.6	1.8	1.5	9.6	1.3	1.1	4.5	12.7	38.1
2200-2300	Pro	1.6	49.1	34.5	0.4	1.6	5.2	1.5	0.7	0.3	5.3
	Ocp	1.1	1.3	1.8	1.5	6.6	1.3	1.2	7.0	12.1	35.9
16 hours	Pro	1.5	50.7	14.9	1.2	0.3	18.0	4.4	3.5	0.2	5.3
	Ocp	1.1	1.5	2.0	4.9	8.3	1.5	1.2	10.8	11.9	36.3

**Legend**

- Pro.** Proportion of vehicles in % (Sum may not add up to 100% due to figure rounding)  
**Ocp.** Average occupancy of vehicles  
**M&H** Medium and Heavy